

Accumulator Charging Unit SLE 02



Pumps and Hydraulic **Solutions**
from Voith Turbo H+L hydraulic.
Systems **Especially for You**

The accumulator charging unit SLE 02 is a compact function element, which offers in an optimum way the requirements of the modern accumulator charging technique.

With smooth, hydraulically controlled switching the system pressure is monitored and held to the chosen pressure level. Low power losses allow an energy optimised system and simultaneously provides, at low driving power, the possibility of high peak capacity.

All functions and safety relevant components are integrated in the unit. The compact block assembly results in reduced pipe work.

As a standard component the SLE 02 operates for pump flow rates up to 75 l/min. Additional optional modular components are available.

Specifications

- integration of all function and safety relevant components
- compact design, simple start up, handling without problems
- high availability, robust and proven function components
- optimised power consumption results in reduced heat emission to the hydraulic system

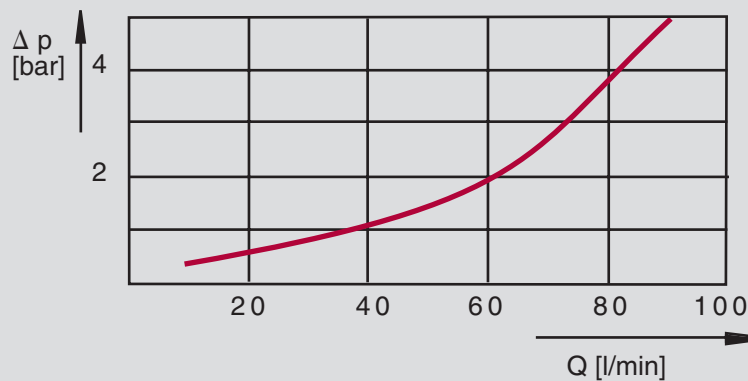
Options

- electrical accumulator discharge / unpressurised electric motor start up
- pressure switch for additional system pressure monitoring
- emergency dump valve

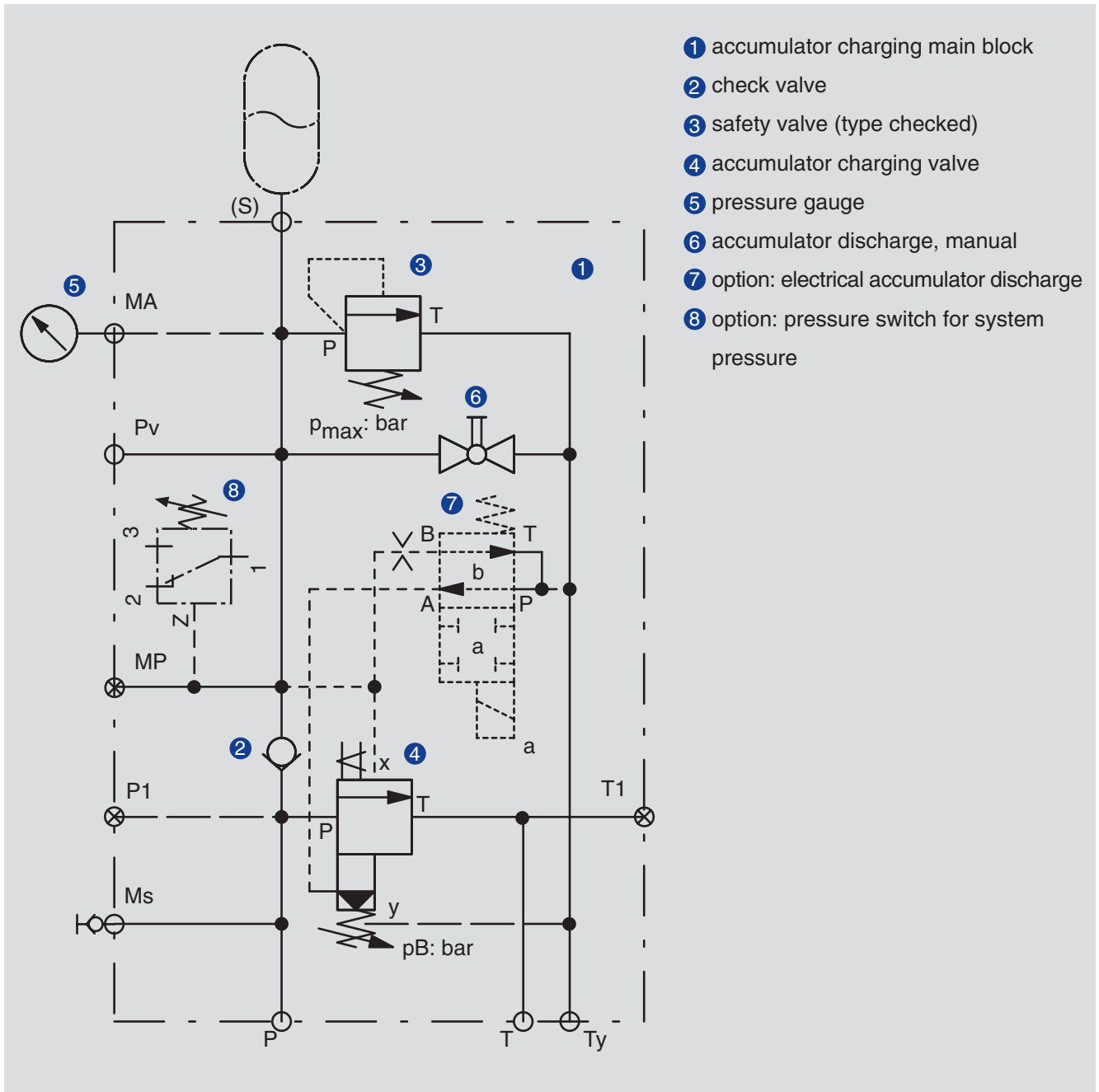
Technical data SLE 02

General		
Mounting method		2 x M10 x 120
Connection of port		see connection size
Mounting position		mountable in any position
Ambient temperature	°C	-5 to 50
Degree of Protection		IP 65
Hydraulic		
Pump flow rate	l/min	75
Operating pressure max.	bar	315
Hydraulic oil temperature	°C	-5 to 70
Viscosity range	mm ² /s	10 to 300
Pressure steps	bar	20-45; 45-80; 80-120; 120-175; 175-250; 250-315
Switching hysteresis	%	5; 10; 15; 20

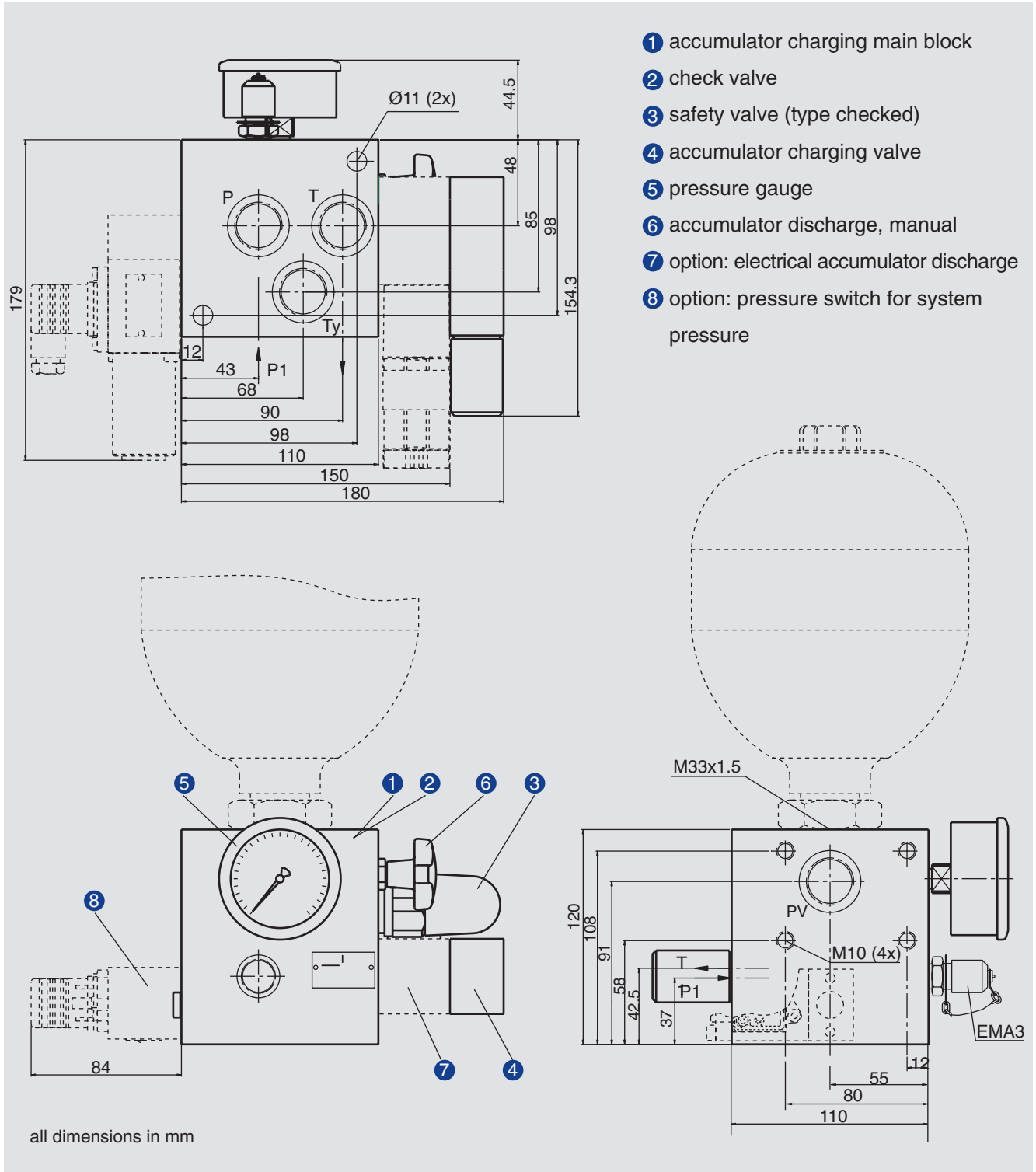
Characteristic curve, by-pass pressure P-T, for hydraulic oil 35 mm²/s, 50°C



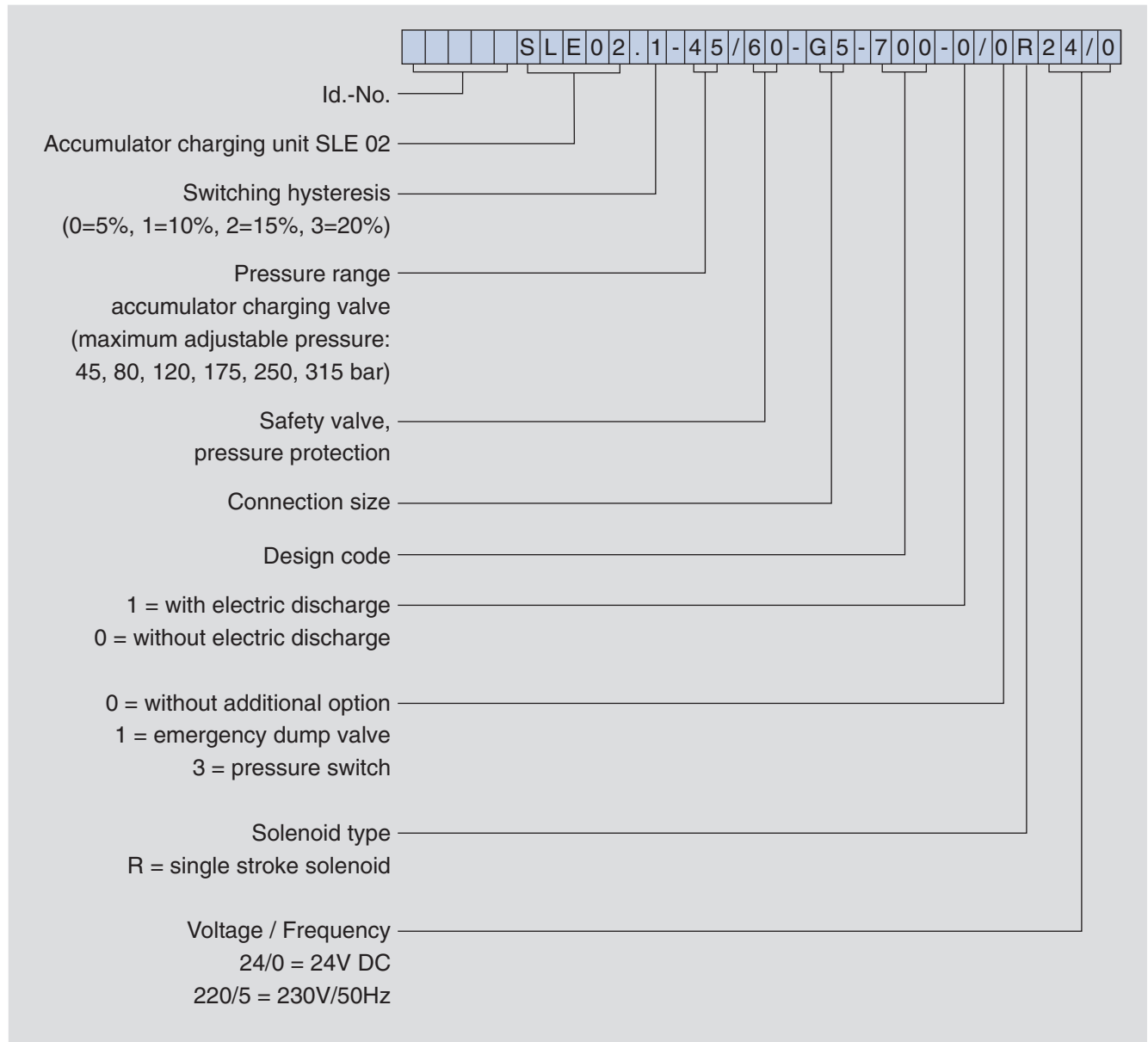
Hydraulic circuit



Dimension drawing



Type code



Connection size G5		
P from pump	P/P1	G ³ / ₄
P to consumer	PV	G ³ / ₄
T by-pass	T/T1	G ³ / ₄
T control oil	Ty	G ³ / ₄
accumulator	S	M 33 x 1.5

Voith Turbo H + L Hydraulic GmbH & Co. KG
Schuckertstr. 15
71277 Rutesheim, Germany
Tel. +49 (0)71 52/9 92-3
Fax +49 (0)71 52/9 92-4 00
sales-rut@voith.com
www.voithturbo.com

VOITH
Engineered reliability.